

Loading Supervision Report

SAMPLE

The purpose of this sample report is to illustrate the format and content of a port loading supervision report and does not involve the collection or processing of personal data.

Company Information:			
Report #:		Issuing Date	
Client PO#:			
Client:			
Exporting Company:			
Loading Port:		Unloading Port:	
Vessel Name:		Voyage No.:	
ETD:		Berth No.	
Product(s):			
Type of shipment:			
Type of Packaging:		Total Gross Weight:	
Packages Number:			
Loading Date:		Inspection Place:	
Suggestions:			

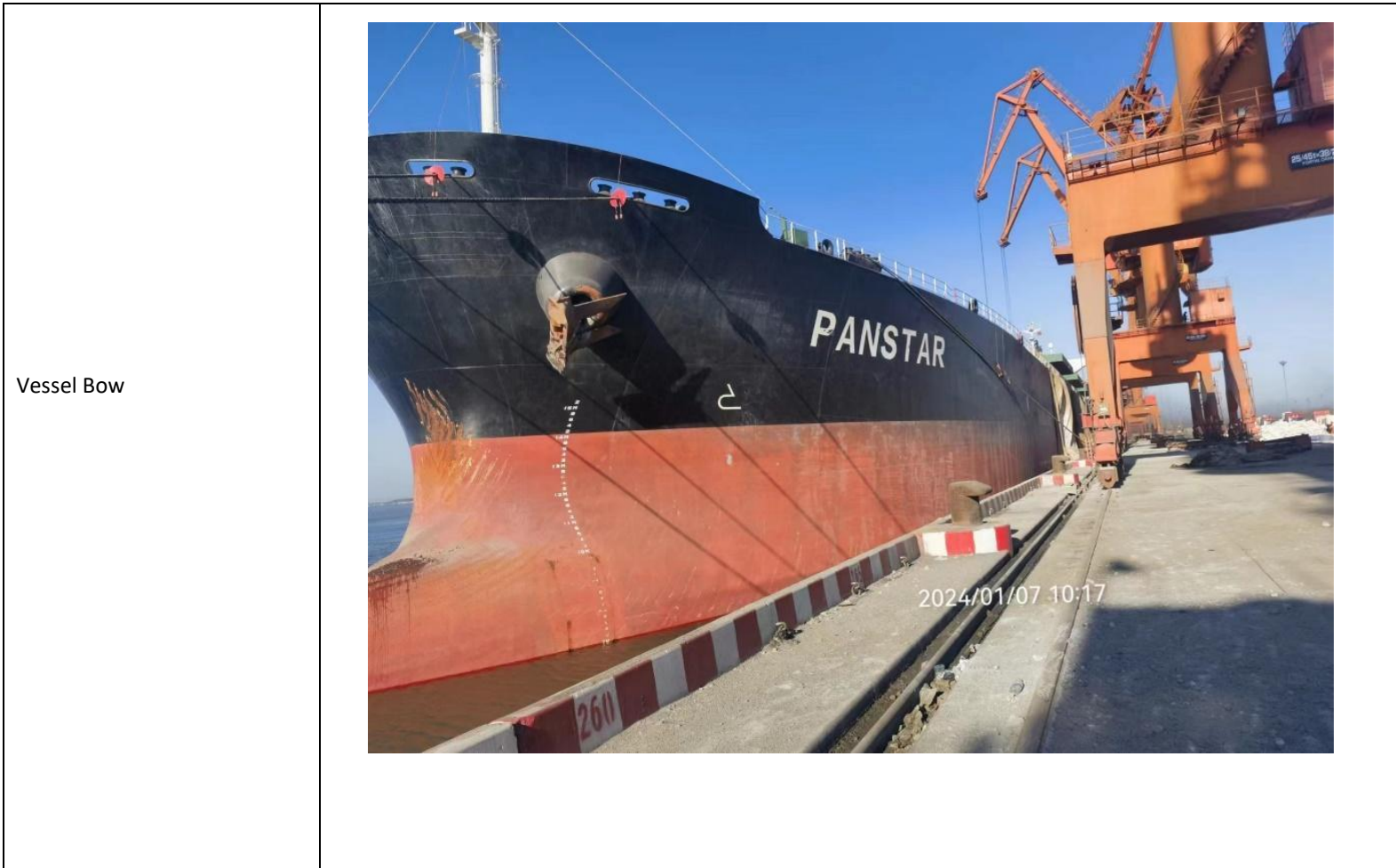
1) VESSEL TIME LOG

Vessel arrived at the anchorage	
Vessel Berthing	
Commenced loading	
Completed loading	

Pre-stowage

MV PANSTAR LOA / 225M BM / 32.26M						
LOADPORT		QUANTITY		DISCHARGE PORT		QUANTITY
BAYUQUAN		40,629.026mt		NOLA		
XINGANG				TOTAL :		
TOTAL :						
NO.7	NO.6	NO.5	NO.4	NO.3	NO.2	NO.1
XGG / NOLA				XGG / NOLA		XGG / NOLA
B/L#YK14 170.425mt / 170bags				B/L#YK10 2,805.6mt / 2,800bags		
B/L#YK13 50.111mt / 37bags				B/L#YK09 1,402.8mt / 1,400bags		
B/L#YK12 30.09mt / 30bags						
	BYQ / NOLA B/L#YK11 1,500MT	BYQ / NOLA B/L#YK01-03 8,570MT	BYQ / NOLA B/L#YK07, 08 13,000MT	BYQ / NOLA B/L#YK04 3,000MT IN BULK		BYQ / NOLA B/L#YK06 5,600MT IN BULK
BYQ / NOLA B/L#YK05 4,500MT IN BULK	不能和其他船同时作业	割包	割包			
TTL: 4,750.626mt / 237bags	TTL: 1,500mt	TTL: 8,570mt	TTL: 13,000mt	TTL: 7,208.4mt / 4,200bags		TTL: 5,600mt

2) WITNESS OF VESSEL LOADING:



Vessel Stern



At the port warehouse, our inspector found the material was stored in the old position and the sealed logo remains in its original shape without any change.



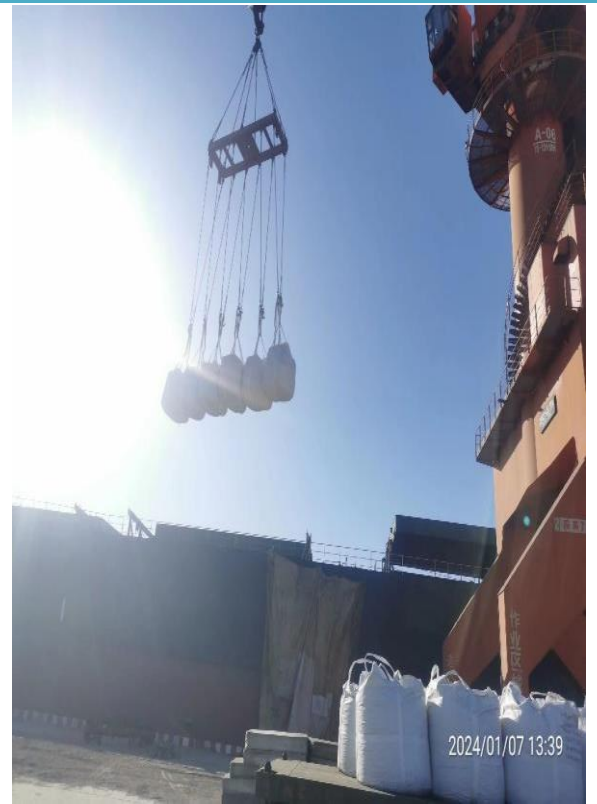
Cargo is delivered by trucks from the warehouse to the ship's crane.



Before the loading process commenced, it was observed that within the cargo hold, another set of goods was arranged in a flat configuration and covered with a blackish-green plastic woven cloth. To ensure segregation, a partition was established between these two batches of goods.



Ship crane took twelve
supersacks at a time.



Spare bags were in a
supersack and put on
top of the pile.



Total of 1,400
supersacks were
loaded by one ship
cranes with special
sling under our
continuous witness.



Following the completion of the loading process, the cargo was segregated from other goods by being covered with a grayish-green plastic woven cloth.



Liability and Legal Terms:

Disclaimer of Warranty: WIT provides this report "as is" without any representation or warranty, express or implied, including, but not limited to, implied warranties of merchantability or fitness for a particular purpose. **Limitation of Liability:** In no event shall WIT will be liable for any direct, indirect, incidental, special, or consequential damages arising out of or in any way connected with the use of this report or the information contained herein. **Confidentiality:** This report and its contents are confidential and may not be disclosed to any third party without the prior written consent of the Client. **Intellectual Property:** All intellectual property rights, including copyrights, patents, trademarks, and trade secrets, in the contents of this report are owned by WIT and the Client. **Governing Law and Jurisdiction:** This report shall be governed by and construed in accordance with the laws of The Peoples Republic of China. Any dispute arising out of or in connection with this report shall be subject to the exclusive jurisdiction of its courts. **No Modification:** This report may not be modified, amended, or supplemented except in writing and signed by both parties. **Severability:** If any provision of this report is found to be invalid or unenforceable, the remaining provisions shall continue to be valid and enforceable to the fullest extent permitted by law. **Indemnification:** The recipient agrees to indemnify and hold harmless WIT from any claims, liabilities, costs, or expenses arising out of or in connection with the use of this report.

By accepting this report, the recipient acknowledges and agrees to be bound by the terms and conditions set forth herein.

Regards,

Worldwide Industrial Trading China